



2005 Judicial Evaluation Survey

Evaluations of the Judges, Commissioners, Magistrates, and Pro-tem Judges/Commissioners
of King County District and Municipal Courts

August 29, 2005

Prepared by:
Judicial Evaluation Committee
King County Bar Association

With Assistance From:
Bart R Salisbury, Ph.D.
6820 43rd Street Court Northwest
Gig Harbor, Washington 98335
(253) 225-6855
bsalisbury@comcast.net

Table of Contents

	<i>Page</i>
Introduction.....	1
Survey Framework	3
Survey Response	3
The Respondents	6
Basis for the Evaluations.....	9
Aggregate Evaluations	10
The King County District Court.....	13
The Municipal Courts of King County.....	19
Conclusion	35
Bibliography.....	35

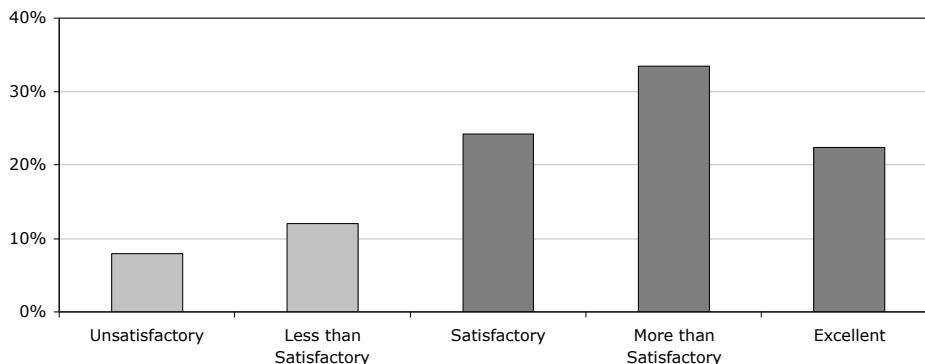
Introduction

Every four years the King County Bar Association conducts a survey to evaluate the performance of the judges, commissioners, and magistrates of the King County District Courts and various independent municipal/city courts in King County. The 2005 survey was expanded to include pro-tem members of these courts. The survey asks attorneys who have appeared before the judicial officers on these courts to assess their performance on four individual dimensions and their overall performance. The individual evaluation dimensions are: decision making, efficiency, demeanor, and impartiality. The purpose of the survey is provide feedback to these judicial officers and inform the public of the quality of these courts. Overall, the results of the 2005 survey present a favorable assessment of these judges, commissioners, and magistrates. Respondents to the survey rendered positive ratings (satisfactory and above) across the five evaluative dimensions at least 77% of the time (see Figure 1).

Different lawyers evaluated each judicial officer and small differences between judicial officers are not necessarily meaningful. Thus, these surveys should not be used for comparative rankings of individual judges.

Figure 1: Aggregate Judicial Evaluations

Decision Making: 80% positive evaluations



Efficiency: 83% positive evaluations

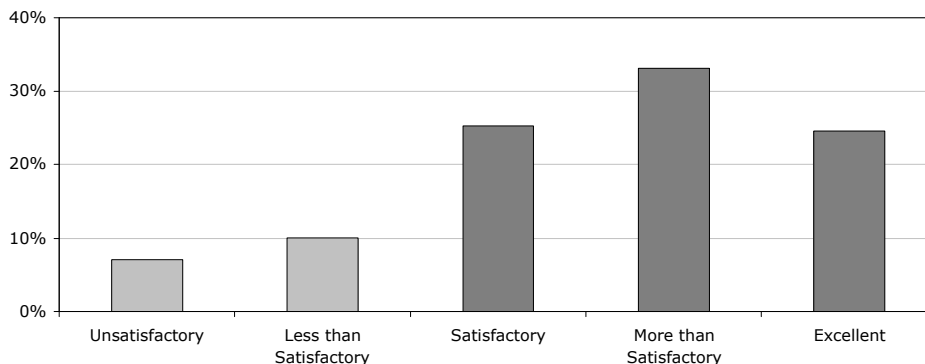
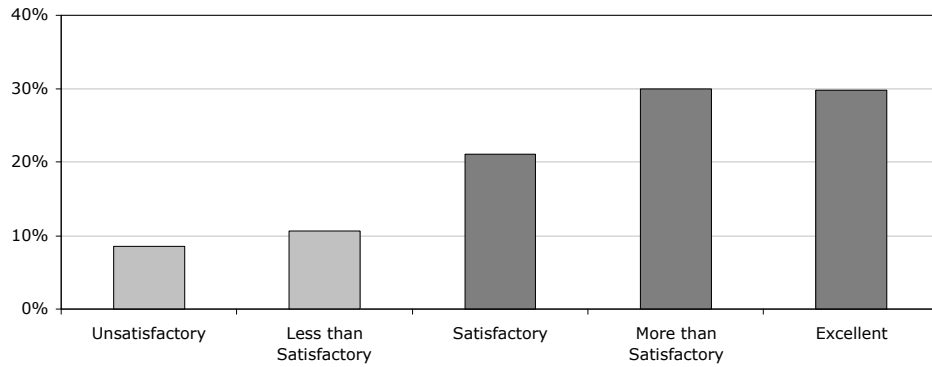
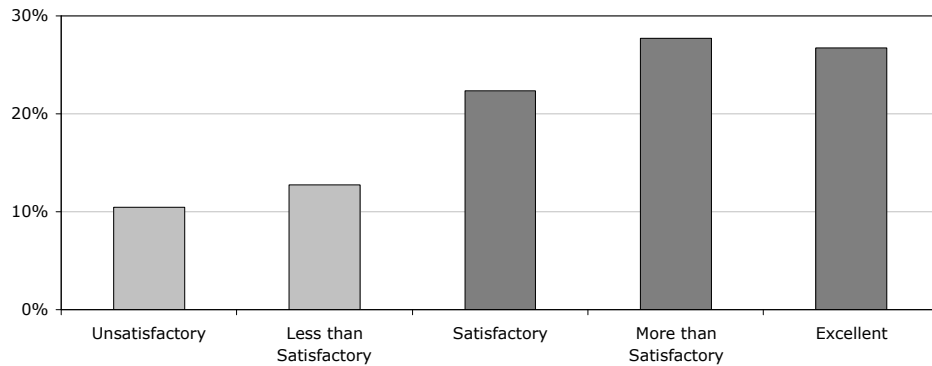


Figure 1: Aggregate Judicial Evaluations, continued

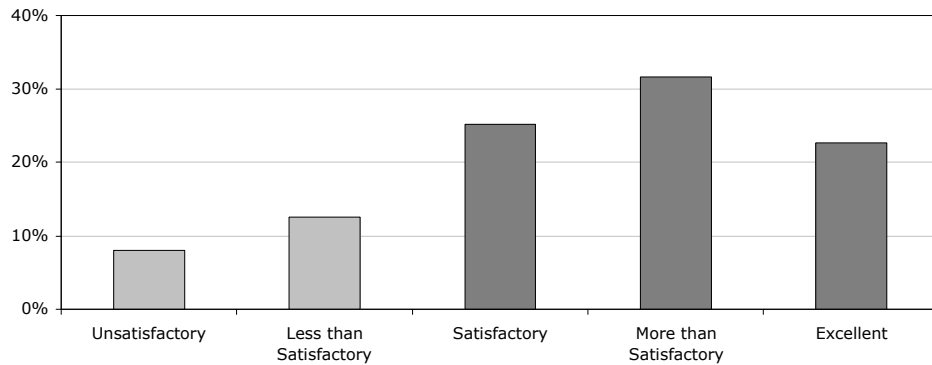
Demeanor: 81% positive evaluations



Impartiality: 77% positive evaluations



Overall Performance: 79% positive evaluations



Positive evaluations = proportion of "satisfactory," "more than satisfactory," and "excellent" evaluations.

The remainder of this report provides a description of the survey methodology, assessment of the reliability of the results, demographics of the respondents, and a breakdown of evaluations, by court and by individual judicial officers within a court.

The Questionnaire

The questionnaire asks respondents to evaluate judges, commissioners, magistrates, and pro-tems on four dimensions of judicial performance, and to provide an evaluation of overall performance. The dimensions, along with their definitions, are:

- | | |
|---------------------|---|
| Decision Making | <ul style="list-style-type: none">• Appropriately prepared for court.• Capably identifies and analyzes factual and legal issues.• Capably applies rules of evidence and procedure.• Articulates a ruling and grounds for it in a clear and concise manner. |
| Efficiency | <ul style="list-style-type: none">• Efficiently uses court time.• Enforces court rules and deadlines fairly.• Controls the courtroom appropriately.• Renders timely decisions. |
| Demeanor | <ul style="list-style-type: none">• Treats all participants courteously and respectfully. |
| Impartiality | <ul style="list-style-type: none">• Performs without bias or prejudice.• Avoids behavior that creates an appearance of bias or prejudice (e.g., inappropriate contacts with parties/counsel). |
| Overall Performance | <ul style="list-style-type: none">• The overall performance of this individual considering all of the attributes above. |

Evaluations are made on a 5-point scale with points labeled: unsatisfactory, less than satisfactory, satisfactory, more than satisfactory and excellent.

Provided with the questionnaire was a cover letter containing an explanation of the purpose of the survey and a set of instructions for completing the survey. A key part of the instructions is that evaluations be based on “personal experience and not on reputation or information received from others.” The questionnaire ensured this with the inclusion of questions regarding the type and number of appearances before each judge evaluated. Evaluations without an indication of an appearance are excluded from the analysis.

Returned questionnaires are included in analysis only if they possess a valid Bar Association number and an attorney signature. This signature attests to the attorney’s compliance with the instructions of the survey and agreement to respect the personal experience criteria for each judge or commissioner evaluated. To ensure respondent confidentiality this section of the page is removed prior to processing the questionnaire for analysis.

Questionnaires, once checked for respondent certification and anonymity, are turned over to Bart R Salisbury for processing. Dr. Salisbury performed the data entry, data analysis, and, results preparation. He also provided methodological and statistical consultation to the Judicial Evaluation Committee.

Survey Response

The names of attorneys for the 2005 judicial evaluation survey were provided by the Administrative Office of the Courts and the Seattle Municipal Court. The Administrative Office of the Courts provided the names for attorneys who appeared in the King County District and King County municipal courts, except Seattle, over the past four years. The Seattle Municipal Court provided a list of attorneys who appeared in it for this same period. Because attorneys may have

appeared in more than one court the lists were checked for duplicate Bar Association numbers. This produced a final list of 4,568 attorneys.

Surveys were mailed early June of 2005. By mid-August of 2005 a total of 340 surveys had been returned to the Bar Association office. The overall response rate for the survey is 7.4%, which is in-line with a mail survey of this type. The number of respondents, however, is lower than in 2001: 535 versus 340 (see Table 1). This decline is consistent with a trend observed for both Superior Court and District Court/municipal court surveys: over time fewer attorneys are responding. The reasons for this trend are not immediately apparent, but may be in part due to an increasing number of attorneys in King County, coupled with a move by courts at all levels to reduce the likelihood of trial (which in turn minimizes courtroom contact).

Table 1: Response to the Survey

	<u>2001</u>	<u>2005</u>
Surveys Mailed:	10,600	4,568
Surveys Returned:	535	340
Blank (no ratings)	47	—
Completed:	488	340
Valid:	419	334
Invalid:	69	6

Response rate is one indicator of the reliability of the survey results. The response rate for the 2005 survey may raise some concern in this regard. However, there are mitigating factors for this survey that counterbalance the low response rate. To begin with, a low response rate is not necessarily indicative of unreliable results. Jon A. Krosnick (1999), a professor of psychology at Stanford University, who specializes in research methodology and assessment, explains that the representativeness of a sample is more important than response rate. If the sample is reflective of the overall population, even if obtained with a low response rate, it still stands as a reliable basis for making generalizations. For example, a study of the predictive error of mail and telephone surveys for Ohio state elections over a 15-year period showed that a mail survey, with a response rate of about 20%, was more accurate (average error of 1.6%) than a telephone survey with a response rate of about 60% (average error of 5.2%). The respondents to this survey are likely to be relatively homogeneous, at least in regards to their education, employment, and, to a lesser degree, their race, gender, and economic status. Because they share a core experience relative to the task at hand, fewer respondents may be needed to produce a high degree of reliability.

Krosnick also argues that the substantive findings of some surveys are not altered when their response rate increases. The average overall performance results for the King County District and Seattle Municipal Courts suggests this to be true of this survey (see Figure 2). As the number of respondents has decreased from 1985 to 2005, the average overall performance evaluation has remained relatively steady. (The average decline observed in 1993 is due to the survey using a 3-point, rather than 5-point, evaluation scale.)

Figure 2: Aggregate Judicial Evaluations

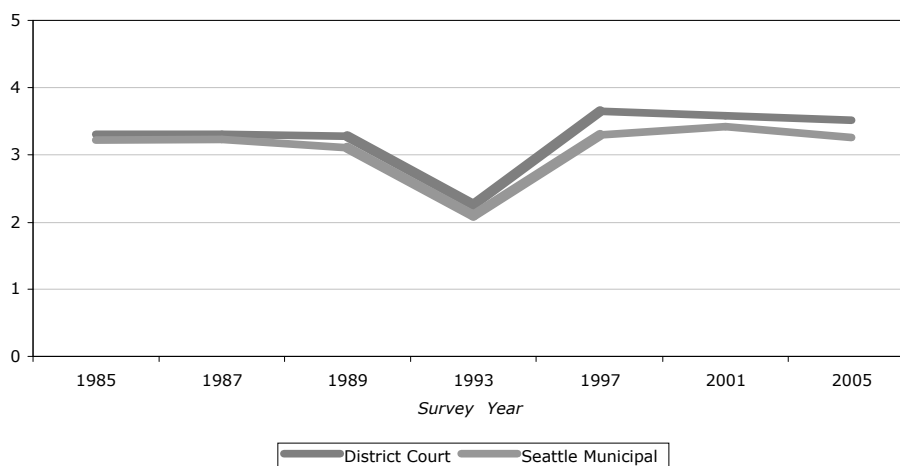


Figure 2 also highlights the reliability of survey results over time. Different respondent sets have evaluated the District and Seattle Municipal courts seven times between 1985 and 2005 and produced similar aggregate results. An analysis of individual judicial officers over time shows a similar low variability over time for average ratings on each of the evaluative dimensions.

In addition, there are three characteristics of this survey which suggest reliable results:

1. *Personal Experience Criteria.* The personal experience criteria are strongly emphasized in the survey instructions. Attorneys are requested to make evaluations only if there exists a sufficient level of experience to do so. This is a self-limiting factor that may dissuade unreliable evaluations from being rendered and submitted. Further bolstering this is the requirement that attorneys certify their adherence to the personal experience criteria by signing the instruction sheet to the survey. (Surveys without this attorney certification are excluded from analysis.)
2. *Self-Selection.* Self-selection is normally viewed as a problem, but in this survey it may be beneficial. In mail surveys, for example, the effort it takes to complete and return the survey tends to limit responses to those who are truly interested in the survey topic. This is an advantage for the judicial evaluation survey, which seeks ratings only from qualified attorneys.
3. *Reasonable Outcomes.* Anecdotal evidence suggests that over the history of the survey the results, in general, make sense to attorneys who appear in the District and municipal courts.

It is also possible that an inherent feature of this survey will be a low response rate for three reasons which do not undermine reliability:

1. *Over-Identification of the Survey Population.* The list of attorneys was provided by the Administrative Office of the Courts. However, ten attorneys contacted the Bar Association to dispute their appearance in these courts over the past four years. The list, therefore, may over-identify the population; including additional respondents who have no experience in these courts. Over-identification of the survey population leads to an artificial suppression of the response rate.

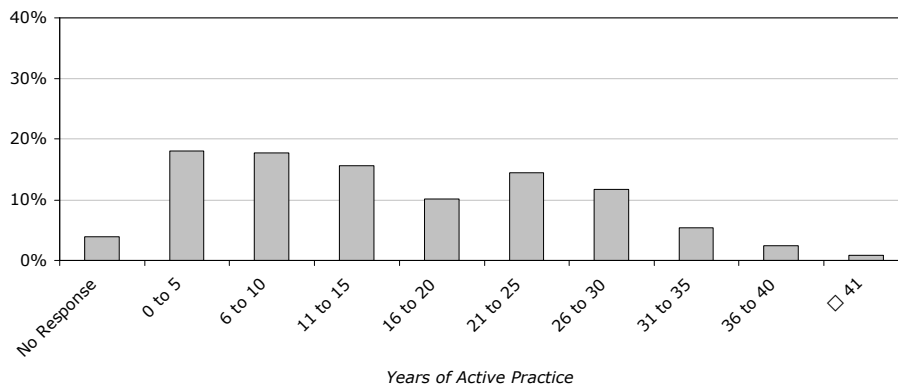
2. *Lack of Identification of Evaluation Populations.* It is not possible to uniquely identify the attorneys who appeared before each individual judicial officer over the past four years. Such attorneys properly comprise the true evaluation population for a judicial officer. It is possible for the response rates for each judicial officer to be higher than the overall response rate. For example, if 300 attorneys appeared before a judge during the evaluation period, and 94 of them rendered an evaluation, this judge’s response rate would be 31%. Identification of these unique evaluation populations is not possible at present.
3. *Changing Nature of Court Exposure.* Several changes in the legal environment have reduced the number of attorneys who appear, and the number of times they appear, in the District and municipal courts. These dynamics are not well documented, but lead to reduced exposure, which in turn reduces the number of qualified respondents. This downward trend, therefore, is not necessarily an expression of a lack of interest by attorneys, but rather a reflection of current trends in the profession.

There is little to suggest that the results of the 2005 survey are unreliable. However, at a minimum the results represent the attitudes of the attorneys who rated these judicial officers. And, even though the results of this survey come from a sample not randomly selected, it is possible to argue that the findings may be safely generalized to all attorneys who appeared in the District and municipal courts of King County during this four year period. (However, caution should be exercised when generalizing evaluations based on very low numbers of respondents.)

The Respondents

Attorneys were asked to provide two pieces of information about their practice: how many years have they been active in their practice; and what is the principal nature of their practice in the District and municipal courts.* On average, responding attorneys have 16.3 years of experience, with responses ranging from six months to 52 years. When broken down into five year intervals the majority of the respondents (60%) have more than 10 years of experience (see Figure 3). The distribution of years of active practice appears to provide a competent basis for the evaluation of judicial performance.

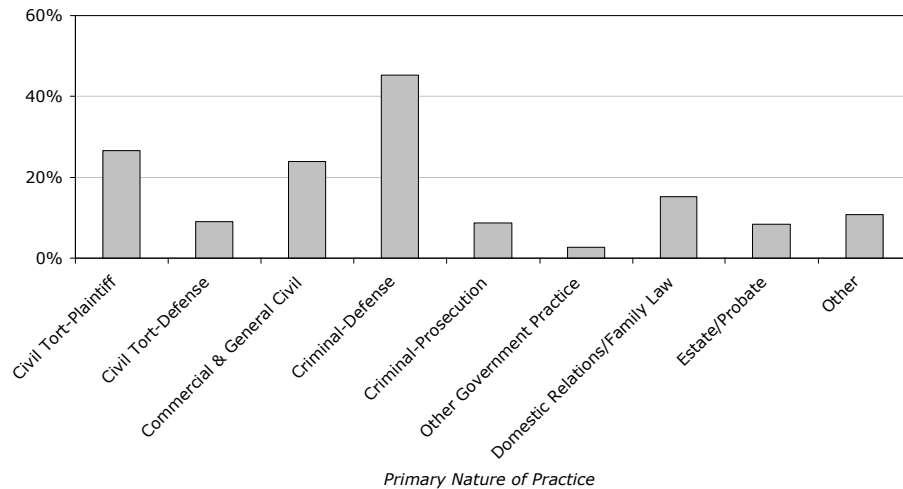
Figure 3: Years of Active Practice
(N = 334)



* The survey instrument mistakenly requests for principal practice in the “Superior Court.” A few respondents noted this error. It is safe to assume that attorneys who responded did so within the context of the survey: i.e., they indicated the primary nature of their District/municipal court practice rather than their Superior Court practice.

Respondents are presented with nine categories for the principal nature of their practice in the District and municipal courts (see Figure 4). They are asked to select no more than two. All but fourteen of the respondents provided this information, with 154 (46%) indicating a single primary practice before the King County Courts and 143 (46%) indicating two primary practices. Thirteen respondents indicated more than two primary practice areas.

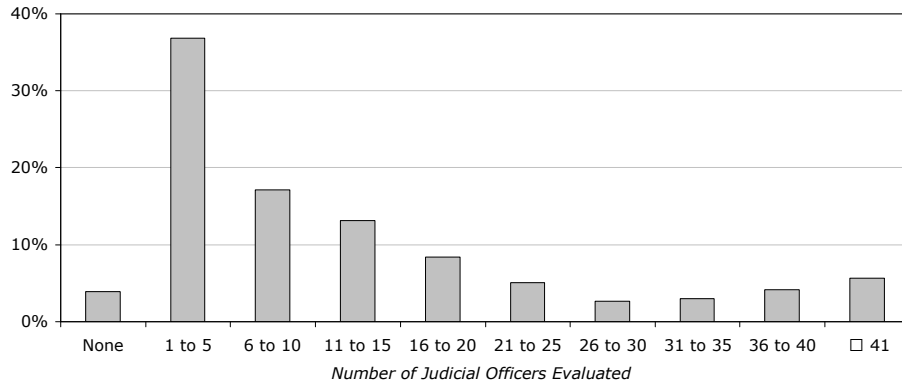
Figure 4: Primary Nature of Practice in Subject Courts
(N = 334)



The results for primary practice are typical of distributions observed on prior District and municipal court surveys. Criminal practice dominates, with 45% of respondents indicating criminal-defense as part of their District/municipal court practice, and another 9% indicating criminal-prosecution. (Twenty-six percent of respondents practice exclusively in this area.) Civil tort practice follows, with 27% primarily involved with plaintiffs, and 9% involved with defense. Third is commercial and general civil practice, with 24% of respondents indicating it a primary area of practice in these courts.

A possible measure of respondent compliance with the evaluation instructions—to only evaluate judicial officers for whom they have sufficient exposure, may be found in the number of evaluations rendered. In general, respondents limited themselves to a handful of judicial officers (see Figure 5). Thirty-seven percent rated no more than five judicial officers, and a majority (54%) rated no more than 10. Given the four-year time frame for the evaluation this distribution appears reasonable.

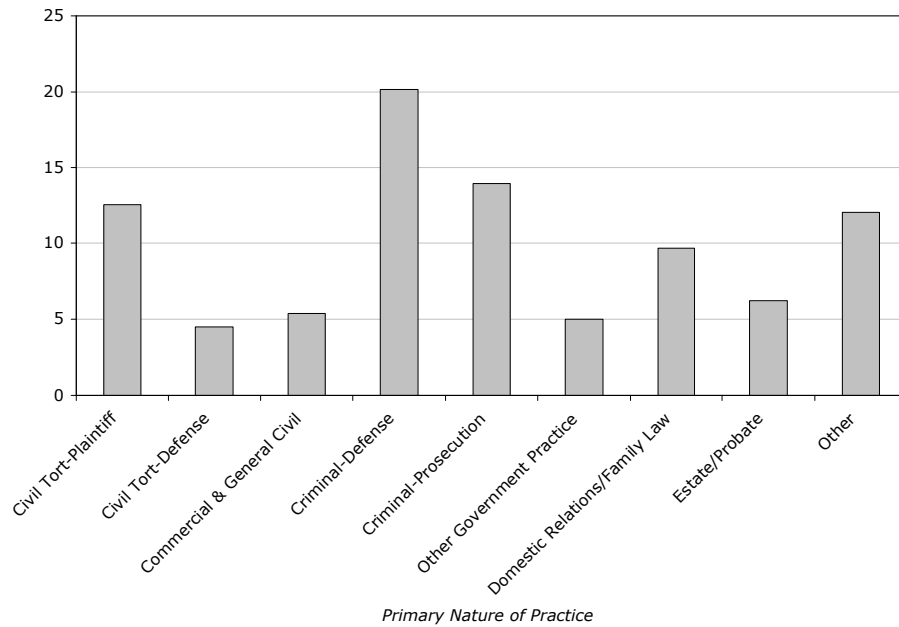
Figure 5: Number of Judicial Officers Evaluated
(N = 334)



While most respondents rated ten or fewer judges, there is still a significant portion that rated more. One concern here would be that respondents are evaluating judges on exposure from outside the four-year evaluation period. Correlating the number of years of active practice with the number of evaluations suggests this is not the case. The correlation coefficient of -0.10 indicates no relationship between these two variables. Rather, the number of evaluations rendered appears to be based more on the nature of an attorney's practice rather than the number of years he or she has been active in that practice. (see Figure 6).^{*} The distribution is highly variable with high averages seen for criminal-defense (20.2 evaluations) and criminal-prosecution (13.9 evaluations), and the low averages for civil tort-defense (4.5 evaluations), other government practice (5.0 evaluations), and commercial and general civil (5.4 evaluations).

^{*} These averages are classified according to primary nature of private practice. Since a respondent may have more than one primary nature, he or she may appear in more than one classification. Although the classifications are not mutually exclusive (i.e., a respondent may appear in only one), the pattern produced is still useful for this cursory examination.

Figure 6: Number of Judicial Officers Evaluated
(N = 334)



Basis for the Evaluations

For each judicial evaluation provided respondents are asked to indicate the type and number of appearances upon which the evaluation is based. The types of appearance are: motion and hearing, trial, and appeal. The number of each is categorized as: none, one, or multiple. (If a respondent indicates none for all of the appearance types his or her evaluation is excluded from the results.) The basis for evaluation most often mentioned is motions and hearings. Eighty-four percent of all evaluations are based upon multiple motions and hearings (see Table 2). Another 14% are based on a single motion and hearing. Trials follow, with 14% of evaluations based on at least one trial, and 23% based on multiple trials. Appeals are seldom mentioned as the basis for evaluation, with only 2% of the evaluations rendered involving one or more appeals.

Table 2: Types and Number of Appearances

	<i>None</i>		<i>One</i>		<i>Multiple</i>	
	<u>Nmbr</u>	<u>Pct</u>	<u>Nmbr</u>	<u>Pct</u>	<u>Nmbr</u>	<u>Pct</u>
Motions & Hearings	60	1%	612	14%	3,558	84%
Trials	2,674	63%	595	14%	961	23%
Appeals	4,142	98%	44	1%	44	1%

One criticism offered of the judicial evaluation survey is that ratings are based on too few meaningful experiences. The fact that most evaluations are based on motions and hearings might support this contention. However, only 12.2% of all evaluations are based on a single motion or hearing. The remaining 87.8% are based upon more than one motion and hearing, or a combination of motions and hearings, trial(s), and appeal(s). Given the stress placed on the personal

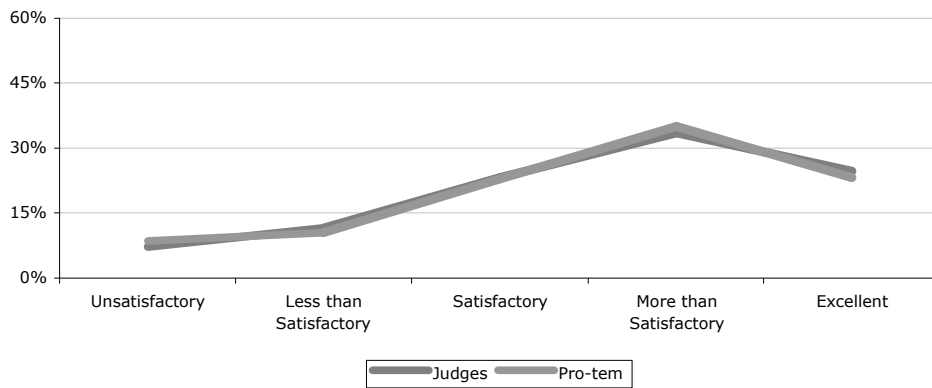
experience criteria in the instructions it may also be likely that those evaluations based on a single motion or hearing are experiences sufficiently complex in nature to permit a meaningful evaluation.

Aggregate Evaluations

The rating scale for the 2005 survey consists of five categories: unsatisfactory, less than satisfactory, satisfactory, more than satisfactory, and excellent. In this section evaluations are aggregated by court: District or municipal; and by position within a court: judge, commissioner, magistrate, or pro-tem. The first set of aggregate evaluations is for the King County District court (see Figure 7). In general the patterns of the line charts, which contrast the results for judges and pro-tem judges show most evaluations being satisfactory or above. On efficiency, demeanor, and impartiality the judges of the District court received slightly higher proportions of more than satisfactory and excellent ratings than did the pro-tem judges. This is also reflected in the evaluation for overall performance.

Figure 7: Aggregate Results for the King County District Court

Decision Making



Efficiency

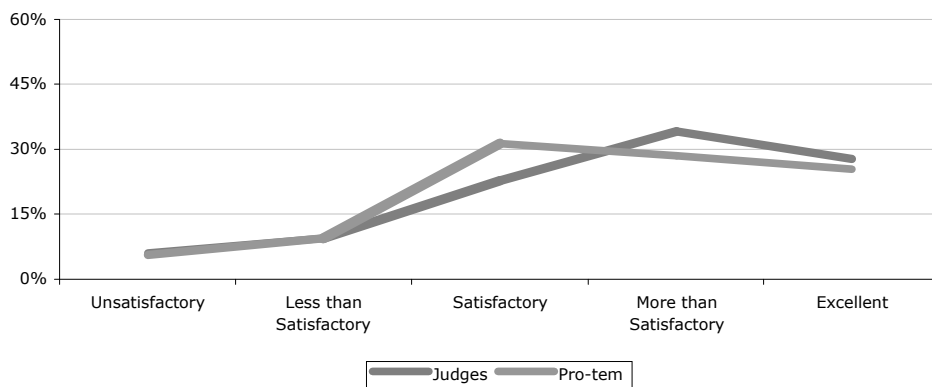
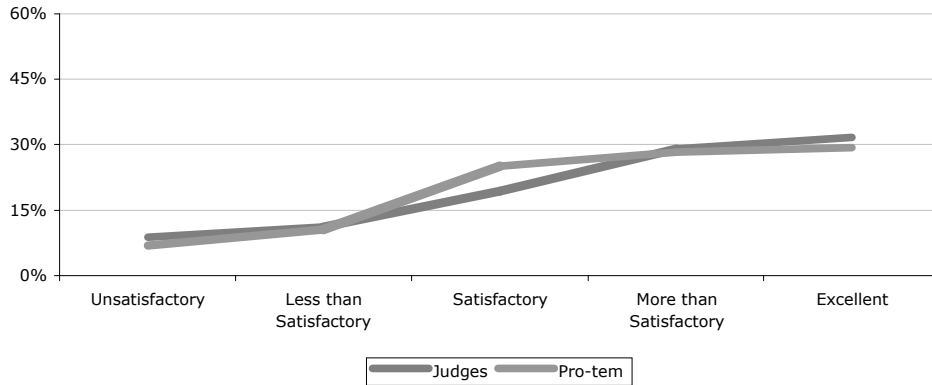
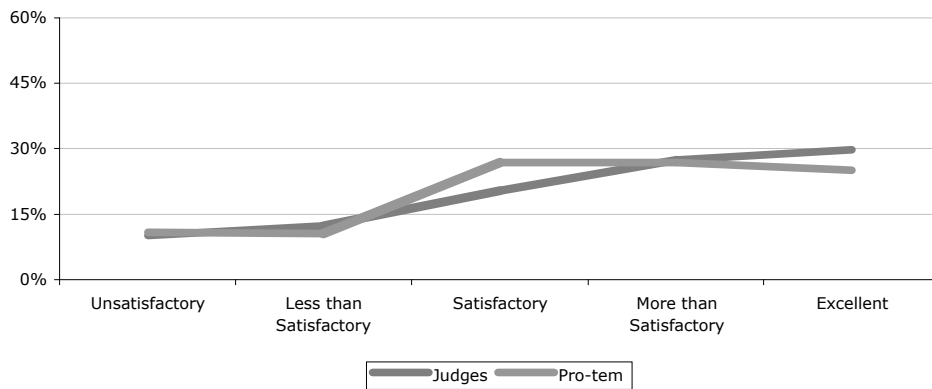


Figure 7: Aggregate Results for the King County District Court, continued

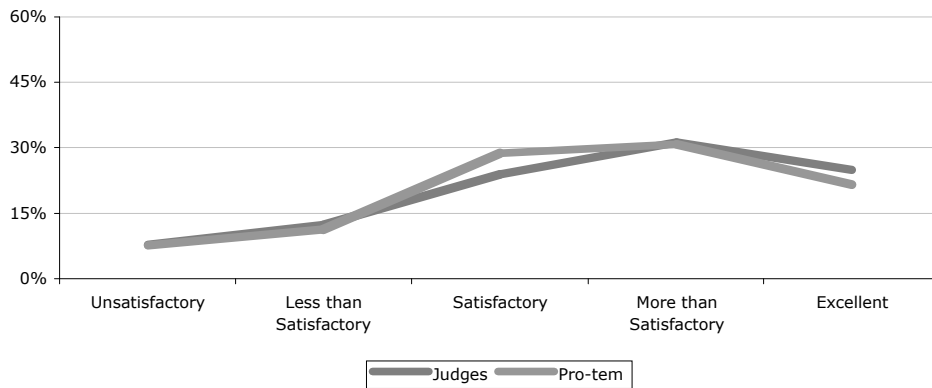
Demeanor



Impartiality



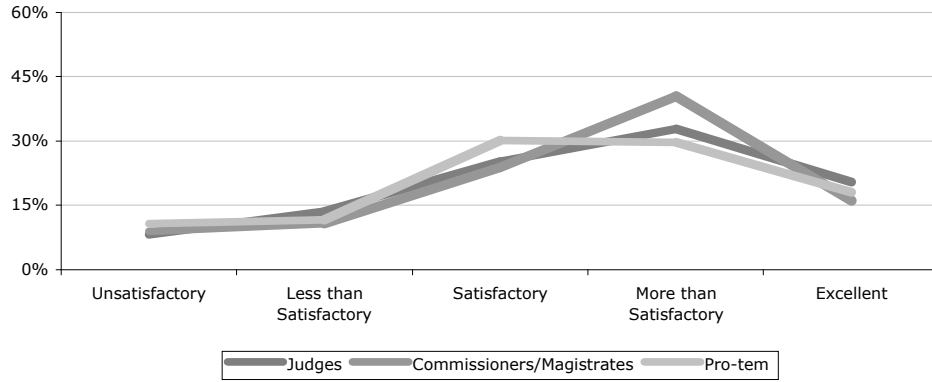
Overall Performance



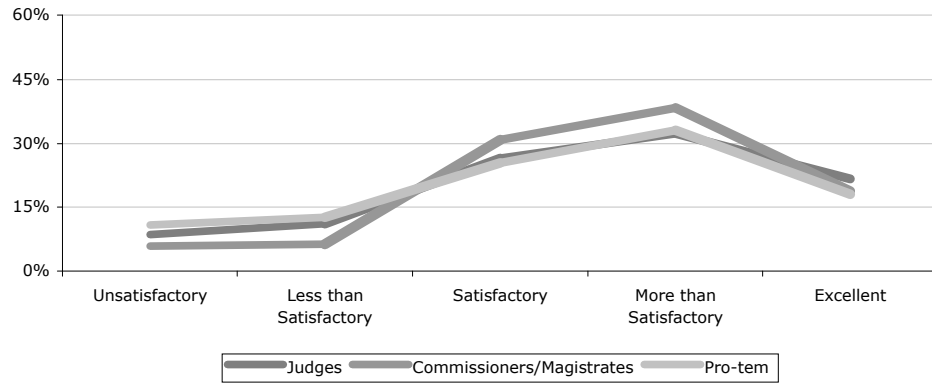
The aggregate results for the municipal courts are presented in Figure 8. In these charts three groups are presented: judges, commissioners/magistrates, and pro-tem judges. The pattern here is similar to that of the District Court where most evaluations are satisfactory or better. In contrast to the District Court, the patterns for the judges and pro-tem judges are roughly similar across evaluative dimensions. The pattern for commissioners and magistrates, however, shows a slightly higher proportion of more than satisfactory evaluations than that of the judges and pro-tem judges.

Figure 8: Aggregate Results for the Municipal Courts

Decision Making



Efficiency



Demeanor

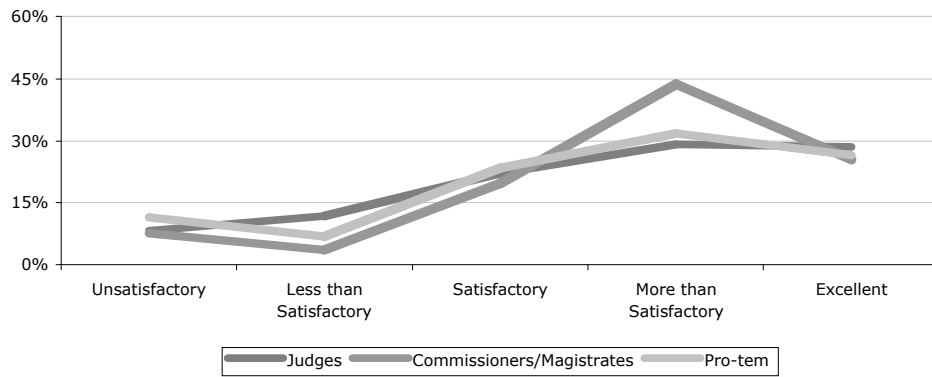
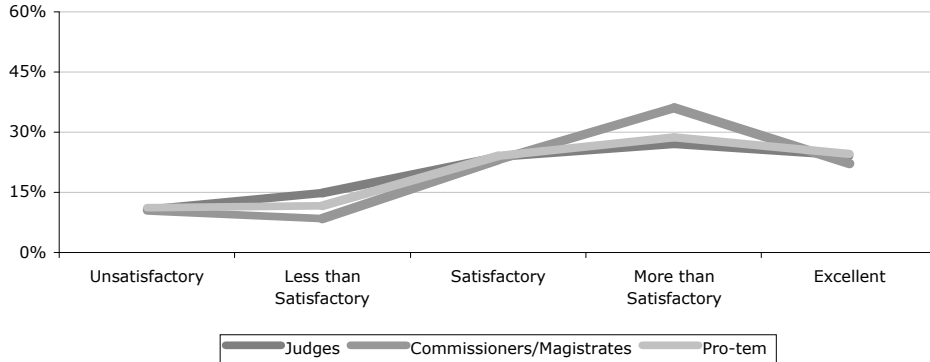
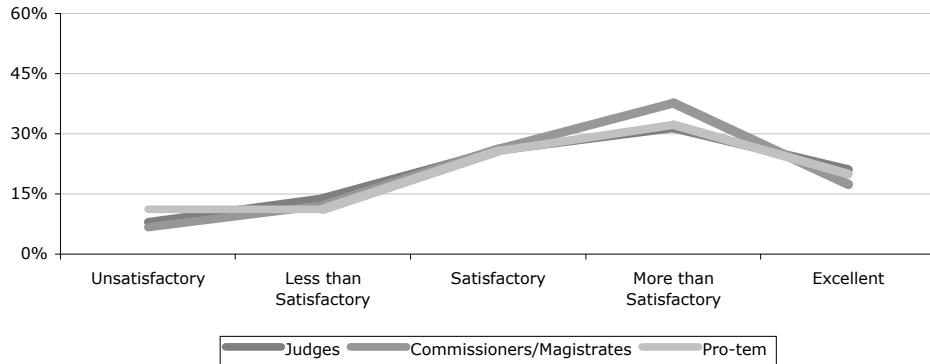


Figure 8: Aggregate Results for the Municipal Court, continued

Impartiality



Overall Performance



The King County District Court

The results for the 23 judges and seven pro-tem judges of the King County District Court are presented in Tables 3 to 7, which appear on the following five pages. These tables present the total number of valid evaluations and the percent of evaluations for each of the five evaluation dimensions. Judicial officers are grouped by type: judge or pro-tem; and judges are grouped by division: East, South, and West. Within each grouping judicial officers are ordered alphabetically.

Different lawyers evaluated each judicial officer and small differences between judicial officers are not necessarily meaningful. Thus, these surveys should not be used for comparative rankings of individual judges.

Table 3: King County District Court, Decision Making

	<u>Number</u>	<u>Unsatisfactory</u>	<u>Less than Satisfactory</u>	<u>Satisfactory</u>	<u>More than Satisfactory</u>	<u>Excellent</u>
Judges						
<i>East Division</i>						
Admire, David	94	5%	6%	16%	37%	35%
Garrow, Janet	89	8%	12%	37%	28%	15%
Jacke, Linda	121	6%	14%	19%	32%	29%
Nault, Peter	101	5%	3%	5%	36%	51%
Ottinger, Mary	100	8%	23%	21%	34%	14%
Smith, Douglas	72	1%	6%	35%	38%	21%
Steiner, David	95	16%	14%	29%	29%	12%
Yeatts, Fred	105	9%	10%	18%	37%	27%
<i>South Division</i>						
Bathum, Richard	85	2%	6%	25%	41%	26%
Christie, David	64	2%	8%	31%	39%	20%
Delaurenti, Charles	100	0%	3%	15%	34%	48%
Eide, Mark	66	3%	6%	33%	42%	15%
Eiler, Judith	91	15%	16%	21%	31%	16%
Harn, Corinna	52	8%	10%	27%	38%	17%
Phillipson, Darrell	87	3%	10%	17%	33%	36%
Seitz, Victoria	75	4%	11%	24%	31%	31%
Stephenson, Elizabeth	62	3%	10%	24%	35%	27%
Thompson, Linda	79	23%	29%	23%	16%	9%
<i>West Division</i>						
Chapman, Arthur	90	7%	16%	29%	32%	17%
Chow, Mark	113	12%	17%	33%	27%	12%
Kato, Eileen	116	9%	12%	24%	31%	24%
Linde, Barbara	96	8%	15%	18%	30%	29%
Spearman, Mariane	64	5%	2%	19%	48%	27%
Pro-tem						
Eng, Park	27	4%	11%	19%	41%	26%
Jorgensen, Karli	90	13%	8%	18%	39%	22%
LaSalata, Frank V.	69	12%	4%	26%	32%	26%
Leverette, Elwood T.	64	2%	8%	30%	36%	25%
Monroe-Asher, Elizabeth*	30	7%	10%	23%	40%	20%
Noonan, Susan J.	64	14%	23%	16%	27%	20%
Stead, Robert E.	45	0%	11%	31%	36%	22%

Table 4: King County District Court, Efficiency

	<u>Number</u>	<u>Unsatisfactory</u>	<u>Less than Satisfactory</u>	<u>Satisfactory</u>	<u>More than Satisfactory</u>	<u>Excellent</u>
Judges						
<i>East Division</i>						
Admire, David	94	3%	6%	11%	40%	39%
Garrow, Janet	88	8%	13%	28%	34%	17%
Jacke, Linda	121	3%	5%	14%	44%	34%
Nault, Peter	101	2%	1%	10%	35%	52%
Ottinger, Mary	101	5%	13%	24%	33%	26%
Smith, Douglas	72	4%	8%	29%	33%	25%
Steiner, David	95	12%	9%	33%	29%	17%
Yeatts, Fred	105	10%	15%	15%	30%	30%
<i>South Division</i>						
Bathum, Richard	83	1%	4%	17%	49%	29%
Christie, David	64	5%	17%	22%	34%	22%
Delaurenti, Charles	100	0%	3%	12%	34%	51%
Eide, Mark	65	2%	8%	25%	46%	20%
Eiler, Judith	93	15%	14%	23%	33%	15%
Harn, Corinna	52	4%	6%	31%	35%	25%
Phillipson, Darrell	86	1%	9%	23%	33%	34%
Seitz, Victoria	75	7%	11%	28%	24%	31%
Stephenson, Elizabeth	62	5%	10%	21%	32%	32%
Thompson, Linda	80	14%	13%	33%	30%	11%
<i>West Division</i>						
Chapman, Arthur	91	7%	14%	35%	30%	14%
Chow, Mark	110	8%	14%	32%	29%	17%
Kato, Eileen	116	8%	10%	23%	26%	33%
Linde, Barbara	96	8%	14%	23%	32%	23%
Spearman, Mariane	65	6%	0%	23%	42%	29%
Pro-tem						
Eng, Park	27	0%	11%	22%	37%	30%
Jorgensen, Karli	90	9%	4%	22%	33%	31%
LaSalata, Frank V.	69	6%	7%	32%	33%	22%
Leverette, Elwood T.	65	2%	6%	40%	23%	29%
Monroe-Asher, Elizabeth*	30	7%	20%	23%	30%	20%
Noonan, Susan J.	65	9%	15%	35%	22%	18%
Stead, Robert E.	45	2%	11%	40%	22%	24%

Table 5: King County District Court, Demeanor

	<u>Number</u>	<u>Unsatisfactory</u>	<u>Less than Satisfactory</u>	<u>Satisfactory</u>	<u>More than Satisfactory</u>	<u>Excellent</u>
Judges						
<i>East Division</i>						
Admire, David	94	5%	3%	12%	45%	35%
Garrow, Janet	88	14%	22%	31%	20%	14%
Jacke, Linda	120	9%	12%	23%	32%	25%
Nault, Peter	101	2%	2%	6%	23%	67%
Ottinger, Mary	101	20%	26%	24%	21%	10%
Smith, Douglas	72	3%	6%	26%	40%	25%
Steiner, David	94	17%	18%	18%	24%	22%
Yeatts, Fred	105	4%	9%	13%	31%	43%
<i>South Division</i>						
Bathum, Richard	83	4%	7%	12%	31%	46%
Christie, David	64	0%	3%	14%	38%	45%
Delaurenti, Charles	99	0%	3%	7%	32%	58%
Eide, Mark	65	2%	9%	20%	37%	32%
Eiler, Judith	94	46%	19%	16%	13%	6%
Harn, Corinna	52	2%	12%	33%	31%	23%
Phillipson, Darrell	86	5%	7%	16%	27%	45%
Seitz, Victoria	75	3%	7%	15%	32%	44%
Stephenson, Elizabeth	62	2%	11%	15%	35%	37%
Thompson, Linda	79	15%	23%	29%	22%	11%
<i>West Division</i>						
Chapman, Arthur	90	9%	17%	23%	27%	24%
Chow, Mark	112	9%	11%	27%	37%	17%
Kato, Eileen	116	9%	11%	29%	19%	31%
Linde, Barbara	95	8%	13%	21%	26%	32%
Spearman, Mariane	63	3%	3%	17%	37%	40%
Pro-tem						
Eng, Park	27	0%	7%	19%	41%	33%
Jorgensen, Karli	90	11%	18%	19%	21%	31%
LaSalata, Frank V.	68	6%	10%	24%	25%	35%
Leverette, Elwood T.	65	5%	5%	35%	29%	26%
Monroe-Asher, Elizabeth*	30	7%	3%	20%	30%	40%
Noonan, Susan J.	65	12%	14%	32%	26%	15%
Stead, Robert E.	44	0%	7%	20%	41%	32%

Table 6: King County District Court, Impartiality

	<u>Number</u>	<u>Unsatisfactory</u>	<u>Less than Satisfactory</u>	<u>Satisfactory</u>	<u>More than Satisfactory</u>	<u>Excellent</u>
Judges						
<i>East Division</i>						
Admire, David	94	7%	5%	13%	39%	35%
Garrow, Janet	88	11%	14%	33%	23%	19%
Jacke, Linda	121	12%	21%	19%	24%	23%
Nault, Peter	101	6%	1%	5%	27%	61%
Ottinger, Mary	100	11%	25%	22%	24%	18%
Smith, Douglas	72	3%	6%	17%	43%	32%
Steiner, David	94	24%	18%	26%	17%	15%
Yeatts, Fred	105	9%	12%	18%	29%	32%
<i>South Division</i>						
Bathum, Richard	84	4%	5%	24%	30%	38%
Christie, David	64	2%	6%	14%	44%	34%
Delaurenti, Charles	100	0%	6%	16%	27%	51%
Eide, Mark	65	5%	6%	29%	31%	29%
Eiler, Judith	92	23%	16%	21%	29%	11%
Harn, Corinna	52	10%	13%	21%	31%	25%
Phillipson, Darrell	87	7%	11%	17%	22%	43%
Seitz, Victoria	75	4%	12%	19%	28%	37%
Stephenson, Elizabeth	62	3%	16%	15%	31%	35%
Thompson, Linda	79	33%	25%	18%	15%	9%
<i>West Division</i>						
Chapman, Arthur	90	10%	18%	27%	20%	26%
Chow, Mark	112	10%	14%	30%	29%	17%
Kato, Eileen	116	13%	9%	23%	24%	31%
Linde, Barbara	95	16%	15%	16%	24%	29%
Spearman, Mariane	62	3%	2%	26%	35%	34%
Pro-tem						
Eng, Park	27	4%	7%	33%	26%	30%
Jorgensen, Karli	90	19%	13%	24%	24%	19%
LaSalata, Frank V.	69	12%	9%	28%	25%	28%
Leverette, Elwood T.	64	5%	3%	33%	33%	27%
Monroe-Asher, Elizabeth*	29	7%	7%	17%	31%	38%
Noonan, Susan J.	65	17%	20%	28%	18%	17%
Stead, Robert E.	44	0%	9%	23%	36%	32%

Table 7: King County District Court, Overall Performance

	<u>Number</u>	<u>Unsatisfactory</u>	<u>Less than Satisfactory</u>	<u>Satisfactory</u>	<u>More than Satisfactory</u>	<u>Excellent</u>
Judges						
<i>East Division</i>						
Admire, David	93	6%	5%	12%	46%	30%
Garrow, Janet	88	9%	15%	41%	19%	16%
Jacke, Linda	120	6%	12%	28%	32%	23%
Nault, Peter	101	4%	5%	2%	31%	58%
Ottinger, Mary	100	9%	26%	24%	30%	11%
Smith, Douglas	74	1%	4%	30%	43%	22%
Steiner, David	95	16%	19%	26%	27%	12%
Yeatts, Fred	105	8%	10%	25%	32%	26%
<i>South Division</i>						
Bathum, Richard	84	1%	8%	18%	42%	31%
Christie, David	63	0%	6%	25%	48%	21%
Delaurenti, Charles	99	0%	1%	14%	36%	48%
Eide, Mark	65	5%	8%	23%	48%	17%
Eiler, Judith	93	26%	22%	18%	24%	11%
Harn, Corinna	51	4%	18%	27%	33%	18%
Phillipson, Darrell	86	2%	9%	21%	31%	36%
Seitz, Victoria	75	3%	12%	27%	29%	29%
Stephenson, Elizabeth	62	5%	10%	24%	27%	34%
Thompson, Linda	78	24%	27%	24%	18%	6%
<i>West Division</i>						
Chapman, Arthur	90	8%	16%	34%	23%	19%
Chow, Mark	112	10%	17%	34%	28%	12%
Kato, Eileen	115	9%	13%	28%	23%	28%
Linde, Barbara	95	12%	14%	22%	23%	29%
Spearman, Mariane	64	6%	3%	20%	38%	33%
Pro-tem						
Eng, Park	27	4%	7%	26%	33%	30%
Jorgensen, Karli	90	12%	13%	22%	34%	18%
LaSalata, Frank V.	69	10%	7%	32%	28%	23%
Leverette, Elwood T.	64	2%	5%	38%	33%	23%
Monroe-Asher, Elizabeth*	30	7%	10%	17%	43%	23%
Noonan, Susan J.	65	12%	23%	31%	18%	15%
Stead, Robert E.	45	0%	9%	31%	33%	27%

The Municipal Courts

The results for the municipal courts are presented in Tables 9 to 13, which appear on the following 15 pages. These tables present the total number of valid evaluations and the percent of evaluations for each of the five evaluation dimensions. A total of 17 municipal courts are included here, with evaluations for 42 judicial officers (24 judges, 3 commissioners, 4 magistrates, and 11 pro-tem judges). The tables are organized by municipality (presented in alphabetical order), and within each municipality by judge, commissioner, magistrate, and pro-tem judge. Within each group judicial officers are ordered alphabetically.

Four of the judicial officers presented in this table appear in more than one court (see Table 8). The results for these individuals are replicated for each court they appeared. Also, Park Eng served as a commissioner for two municipalities (Kirkland and Tukwila), and served as a pro-tem judge for the King County District Court. Mr. Eng was rated separately for his commissioner and pro-tem duties.

Table 8: Judicial Officers with Multiple Courts

	<u>Court</u>	<u>Position</u>
Stephen Rochon	Maple Valley Pacific	Judge Judge
Park Eng	Kirkland Tukwila District Court	Commissioner Commissioner Pro-tem
Elizabeth Monroe-Asher	Lake Forest Park Tukwila District Court	Pro-tem Pro-tem Pro-tem
Norm Scott Stewart	Issaquah Kirkland Tukwila	Pro-tem Pro-tem Pro-tem

Different lawyers evaluated each judicial officer and small differences between judicial officers are not necessarily meaningful. Thus, these surveys should not be used for comparative rankings of individual judges.

Table 9: Municipal Courts, Decision Making

Auburn Municipal Court

	<u>Number</u>	<u>Unsatisfactory</u>	<u>Less than Satisfactory</u>	<u>Satisfactory</u>	<u>More than Satisfactory</u>	<u>Excellent</u>
Judge						
Burns, Patrick	50	14%	20%	44%	16%	6%
Pro-tem						
Curry, John F.	18	11%	11%	44%	22%	11%
Williams, Daniel	11	9%	9%	55%	27%	0%

Black Diamond Municipal Court

	<u>Number</u>	<u>Unsatisfactory</u>	<u>Less than Satisfactory</u>	<u>Satisfactory</u>	<u>More than Satisfactory</u>	<u>Excellent</u>
Judge						
West, Robert	21	10%	19%	14%	33%	24%

Bothell Municipal Court

	<u>Number</u>	<u>Unsatisfactory</u>	<u>Less than Satisfactory</u>	<u>Satisfactory</u>	<u>More than Satisfactory</u>	<u>Excellent</u>
Judge						
Rusden, John	45	0%	4%	24%	51%	20%

Des Moines Municipal Court

	<u>Number</u>	<u>Unsatisfactory</u>	<u>Less than Satisfactory</u>	<u>Satisfactory</u>	<u>More than Satisfactory</u>	<u>Excellent</u>
Judge						
Hartl, Colleen	41	5%	5%	15%	34%	41%

Enumclaw Municipal Court

	<u>Number</u>	<u>Unsatisfactory</u>	<u>Less than Satisfactory</u>	<u>Satisfactory</u>	<u>More than Satisfactory</u>	<u>Excellent</u>
Judge						
Berner, David	27	7%	15%	33%	22%	22%

Federal Way Municipal Court

	<u>Number</u>	<u>Unsatisfactory</u>	<u>Less than Satisfactory</u>	<u>Satisfactory</u>	<u>More than Satisfactory</u>	<u>Excellent</u>
Judge						
Tracy, David	45	7%	11%	33%	33%	16%
Commissioner						
Platter, Tony	37	3%	5%	16%	43%	32%

Issaquah Municipal Court

	<u>Number</u>	<u>Unsatisfactory</u>	<u>Less than Satisfactory</u>	<u>Satisfactory</u>	<u>More than Satisfactory</u>	<u>Excellent</u>
Judge						
Jarvis, Peter	21	14%	14%	19%	33%	19%
Pro-tem						
Stewart, Norm Scott*	34	0%	0%	26%	41%	32%

Table 9: Municipal Courts, Decision Making, continued

Kent Municipal Court

Judge	Number	Unsatisfactory	<u>Less than Satisfactory</u>	Satisfactory	<u>More than Satisfactory</u>	Excellent
McSeveney, Robert	68	3%	4%	9%	41%	43%
Phillips, Glenn	42	5%	14%	21%	33%	26%

Kirkland Municipal Court

Judge	Number	Unsatisfactory	<u>Less than Satisfactory</u>	Satisfactory	<u>More than Satisfactory</u>	Excellent
Raines, Albert	86	5%	9%	20%	33%	34%
Commissioner Eng, Park*	29	0%	14%	14%	52%	21%
Pro-tem Stewart, Norm Scott*	34	0%	0%	26%	41%	32%

Lake Forest Park Municipal Court

Judge	Number	Unsatisfactory	<u>Less than Satisfactory</u>	Satisfactory	<u>More than Satisfactory</u>	Excellent
Portnoy, Linda	49	12%	24%	20%	29%	14%
Pro-tem Monroe-Asher, Elizabeth*	30	7%	10%	23%	40%	20%

Maple Valley Municipal Court

Judge	Number	Unsatisfactory	<u>Less than Satisfactory</u>	Satisfactory	<u>More than Satisfactory</u>	Excellent
Rochon, Stephen*	58	10%	14%	26%	34%	16%

Mercer Island Municipal Court

Judge	Number	Unsatisfactory	<u>Less than Satisfactory</u>	Satisfactory	<u>More than Satisfactory</u>	Excellent
Stewart, Wayne	35	3%	3%	29%	34%	31%

Pacific Municipal Court

Judge	Number	Unsatisfactory	<u>Less than Satisfactory</u>	Satisfactory	<u>More than Satisfactory</u>	Excellent
Rochon, Stephen*	58	10%	14%	26%	34%	16%

Renton Municipal Court

Judge	Number	Unsatisfactory	<u>Less than Satisfactory</u>	Satisfactory	<u>More than Satisfactory</u>	Excellent
Jurado, Terry	49	4%	24%	22%	37%	12%

Table 9: Municipal Courts, Decision Making, continued

SeaTac Municipal Court

	<u>Number</u>	<u>Unsatisfactory</u>	<u>Less than Satisfactory</u>	<u>Satisfactory</u>	<u>More than Satisfactory</u>	<u>Excellent</u>
Judge						
Codd, Paul	33	3%	9%	21%	48%	18%
Pro-tem						
Cordi-Bejarano, Elizabeth M.	24	17%	8%	50%	13%	13%

Seattle Municipal Court

	<u>Number</u>	<u>Unsatisfactory</u>	<u>Less than Satisfactory</u>	<u>Satisfactory</u>	<u>More than Satisfactory</u>	<u>Excellent</u>
Judges						
Bonner, Fred	76	12%	18%	32%	26%	12%
Charles, Edsonya	15	33%	40%	13%	13%	0%
Hightower, Judith	90	6%	14%	32%	32%	16%
Holifield, George	91	19%	18%	29%	29%	7%
Hurtado, Michael	108	6%	14%	29%	31%	21%
Kondo, C. Kimi	71	21%	14%	38%	20%	7%
Mamiya, Ron	82	4%	12%	26%	34%	24%
Rietschel, Jean	66	5%	8%	14%	44%	30%
Commissioner						
Eisenberg, Adam	41	17%	20%	24%	27%	12%
Magistrates						
DeVilla, Francis	33	6%	3%	36%	39%	15%
Duffey, Charles	19	21%	5%	26%	32%	16%
Hankins, Debbie	28	14%	14%	18%	50%	4%
Wilson, Shirley	36	6%	11%	31%	42%	11%
Pro-tem						
Alicea-Galvan, Veronica	42	12%	12%	24%	38%	14%
Danieli, Ann	33	0%	6%	18%	39%	36%
Durham, Elsa R.	44	30%	27%	27%	9%	7%

Tukwila Municipal Court

	<u>Number</u>	<u>Unsatisfactory</u>	<u>Less than Satisfactory</u>	<u>Satisfactory</u>	<u>More than Satisfactory</u>	<u>Excellent</u>
Judge						
Walden, Kimberly	34	0%	15%	12%	44%	29%
Commissioner						
Eng, Park*	29	0%	14%	14%	52%	21%
Pro-tem						
Cromwell, Gregory F.	5	0%	20%	60%	20%	0%
Cufley, Christy Gerhart	9	0%	11%	44%	33%	11%
Monroe-Asher, Elizabeth*	30	7%	10%	23%	40%	20%
Prothero, Mark	10	10%	10%	10%	40%	30%
Stewart, Norm Scott*	34	0%	0%	26%	41%	32%

*This person's results are replicated in several places on this table.

Table 10: Municipal Courts, Efficiency

Auburn Municipal Court

	<u>Number</u>	<u>Unsatisfactory</u>	<u>Less than Satisfactory</u>	<u>Satisfactory</u>	<u>More than Satisfactory</u>	<u>Excellent</u>
Judge						
Burns, Patrick	50	20%	18%	30%	24%	8%
Pro-tem						
Curry, John F.	18	17%	0%	33%	44%	6%
Williams, Daniel	11	0%	9%	45%	45%	0%

Black Diamond Municipal Court

	<u>Number</u>	<u>Unsatisfactory</u>	<u>Less than Satisfactory</u>	<u>Satisfactory</u>	<u>More than Satisfactory</u>	<u>Excellent</u>
Judge						
West, Robert	21	19%	5%	14%	33%	29%

Bothell Municipal Court

	<u>Number</u>	<u>Unsatisfactory</u>	<u>Less than Satisfactory</u>	<u>Satisfactory</u>	<u>More than Satisfactory</u>	<u>Excellent</u>
Judge						
Rusden, John	46	2%	4%	22%	43%	28%

Des Moines Municipal Court

	<u>Number</u>	<u>Unsatisfactory</u>	<u>Less than Satisfactory</u>	<u>Satisfactory</u>	<u>More than Satisfactory</u>	<u>Excellent</u>
Judge						
Hartl, Colleen	42	5%	2%	12%	45%	36%

Enumclaw Municipal Court

	<u>Number</u>	<u>Unsatisfactory</u>	<u>Less than Satisfactory</u>	<u>Satisfactory</u>	<u>More than Satisfactory</u>	<u>Excellent</u>
Judge						
Berner, David	27	15%	26%	15%	26%	19%

Federal Way Municipal Court

	<u>Number</u>	<u>Unsatisfactory</u>	<u>Less than Satisfactory</u>	<u>Satisfactory</u>	<u>More than Satisfactory</u>	<u>Excellent</u>
Judge						
Tracy, David	46	7%	13%	30%	24%	26%
Commissioner						
Platter, Tony	37	3%	3%	11%	49%	35%

Issaquah Municipal Court

	<u>Number</u>	<u>Unsatisfactory</u>	<u>Less than Satisfactory</u>	<u>Satisfactory</u>	<u>More than Satisfactory</u>	<u>Excellent</u>
Judge						
Jarvis, Peter	21	14%	10%	19%	38%	19%
Pro-tem						
Stewart, Norm Scott*	34	0%	0%	21%	47%	32%

Table 10: Municipal Courts, Efficiency, continued

Kent Municipal Court

	<u>Number</u>	<u>Unsatisfactory</u>	<u>Less than Satisfactory</u>	<u>Satisfactory</u>	<u>More than Satisfactory</u>	<u>Excellent</u>
Judge						
McSeveney, Robert	68	3%	1%	15%	46%	35%
Phillips, Glenn	42	7%	7%	21%	36%	29%

Kirkland Municipal Court

	<u>Number</u>	<u>Unsatisfactory</u>	<u>Less than Satisfactory</u>	<u>Satisfactory</u>	<u>More than Satisfactory</u>	<u>Excellent</u>
Judge						
Raines, Albert	86	3%	10%	23%	29%	34%
Commissioner						
Eng, Park*	30	0%	10%	30%	40%	20%
Pro-tem						
Stewart, Norm Scott*	34	0%	0%	21%	47%	32%

Lake Forest Park Municipal Court

	<u>Number</u>	<u>Unsatisfactory</u>	<u>Less than Satisfactory</u>	<u>Satisfactory</u>	<u>More than Satisfactory</u>	<u>Excellent</u>
Judge						
Portnoy, Linda	49	6%	10%	35%	37%	12%
Pro-tem						
Monroe-Asher, Elizabeth*	30	7%	20%	23%	30%	20%

Maple Valley Municipal Court

	<u>Number</u>	<u>Unsatisfactory</u>	<u>Less than Satisfactory</u>	<u>Satisfactory</u>	<u>More than Satisfactory</u>	<u>Excellent</u>
Judge						
Rochon, Stephen*	58	14%	24%	29%	22%	10%

Mercer Island Municipal Court

	<u>Number</u>	<u>Unsatisfactory</u>	<u>Less than Satisfactory</u>	<u>Satisfactory</u>	<u>More than Satisfactory</u>	<u>Excellent</u>
Judge						
Stewart, Wayne	35	3%	6%	29%	34%	29%

Pacific Municipal Court

	<u>Number</u>	<u>Unsatisfactory</u>	<u>Less than Satisfactory</u>	<u>Satisfactory</u>	<u>More than Satisfactory</u>	<u>Excellent</u>
Judge						
Rochon, Stephen*	58	14%	24%	29%	22%	10%

Renton Municipal Court

	<u>Number</u>	<u>Unsatisfactory</u>	<u>Less than Satisfactory</u>	<u>Satisfactory</u>	<u>More than Satisfactory</u>	<u>Excellent</u>
Judge						
Jurado, Terry	49	16%	14%	20%	35%	14%

Table 10: Municipal Courts, Efficiency, continued

SeaTac Municipal Court

	<u>Number</u>	<u>Unsatisfactory</u>	<u>Less than Satisfactory</u>	<u>Satisfactory</u>	<u>More than Satisfactory</u>	<u>Excellent</u>
Judge						
Codd, Paul	33	3%	6%	33%	39%	18%
Pro-tem						
Cordi-Bejarano, Elizabeth M.	24	17%	17%	29%	21%	17%

Seattle Municipal Court

	<u>Number</u>	<u>Unsatisfactory</u>	<u>Less than Satisfactory</u>	<u>Satisfactory</u>	<u>More than Satisfactory</u>	<u>Excellent</u>
Judges						
Bonner, Fred	76	9%	14%	28%	28%	21%
Charles, Edsonya	15	27%	27%	20%	27%	0%
Hightower, Judith	90	11%	16%	34%	22%	17%
Holifield, George	90	19%	16%	28%	27%	11%
Hurtado, Michael	107	4%	4%	31%	34%	28%
Kondo, C. Kimi	71	13%	14%	44%	23%	7%
Mamiya, Ron	82	2%	12%	23%	38%	24%
Rietschel, Jean	67	3%	6%	24%	45%	22%
Commissioner						
Eisenberg, Adam	41	10%	7%	32%	29%	22%
Magistrates						
DeVilla, Francis	33	6%	0%	36%	36%	21%
Duffey, Charles	19	11%	21%	21%	37%	11%
Hankins, Debbie	28	7%	7%	50%	29%	7%
Wilson, Shirley	36	6%	3%	36%	47%	8%
Pro-tem						
Alicea-Galvan, Veronica	42	10%	14%	21%	36%	19%
Danieli, Ann	33	0%	3%	15%	52%	30%
Durham, Elsa R.	44	30%	27%	32%	5%	7%

Tukwila Municipal Court

	<u>Number</u>	<u>Unsatisfactory</u>	<u>Less than Satisfactory</u>	<u>Satisfactory</u>	<u>More than Satisfactory</u>	<u>Excellent</u>
Judge						
Walden, Kimberly	34	0%	9%	21%	32%	38%
Commissioner						
Eng, Park*	30	0%	10%	30%	40%	20%
Pro-tem						
Cromwell, Gregory F.	5	20%	0%	60%	20%	0%
Cufley, Christy Gerhart	9	0%	22%	33%	33%	11%
Monroe-Asher, Elizabeth*	30	7%	20%	23%	30%	20%
Prothero, Mark	10	10%	10%	0%	50%	30%
Stewart, Norm Scott*	34	0%	0%	21%	47%	32%

*This person's results are replicated in several places on this table.

Table 11: Municipal Courts, Demeanor

Auburn Municipal Court

	<u>Number</u>	<u>Unsatisfactory</u>	<u>Less than Satisfactory</u>	<u>Satisfactory</u>	<u>More than Satisfactory</u>	<u>Excellent</u>
Judge						
Burns, Patrick	50	12%	26%	38%	12%	12%
Pro-tem						
Curry, John F.	18	17%	6%	22%	39%	17%
Williams, Daniel	11	0%	0%	55%	36%	9%

Black Diamond Municipal Court

	<u>Number</u>	<u>Unsatisfactory</u>	<u>Less than Satisfactory</u>	<u>Satisfactory</u>	<u>More than Satisfactory</u>	<u>Excellent</u>
Judge						
West, Robert	21	5%	5%	19%	38%	33%

Bothell Municipal Court

	<u>Number</u>	<u>Unsatisfactory</u>	<u>Less than Satisfactory</u>	<u>Satisfactory</u>	<u>More than Satisfactory</u>	<u>Excellent</u>
Judge						
Rusden, John	46	2%	0%	9%	52%	37%

Des Moines Municipal Court

	<u>Number</u>	<u>Unsatisfactory</u>	<u>Less than Satisfactory</u>	<u>Satisfactory</u>	<u>More than Satisfactory</u>	<u>Excellent</u>
Judge						
Hartl, Colleen	42	5%	2%	2%	29%	62%

Enumclaw Municipal Court

	<u>Number</u>	<u>Unsatisfactory</u>	<u>Less than Satisfactory</u>	<u>Satisfactory</u>	<u>More than Satisfactory</u>	<u>Excellent</u>
Judge						
Berner, David	27	0%	15%	26%	30%	30%

Federal Way Municipal Court

	<u>Number</u>	<u>Unsatisfactory</u>	<u>Less than Satisfactory</u>	<u>Satisfactory</u>	<u>More than Satisfactory</u>	<u>Excellent</u>
Judge						
Tracy, David	46	9%	4%	35%	26%	26%
Commissioner						
Platter, Tony	37	0%	0%	0%	54%	46%

Issaquah Municipal Court

	<u>Number</u>	<u>Unsatisfactory</u>	<u>Less than Satisfactory</u>	<u>Satisfactory</u>	<u>More than Satisfactory</u>	<u>Excellent</u>
Judge						
Jarvis, Peter	21	19%	10%	24%	29%	19%
Pro-tem						
Stewart, Norm Scott*	34	0%	0%	21%	44%	35%

Table 11: Municipal Courts, Demeanor, continued

Kent Municipal Court

	<u>Number</u>	<u>Unsatisfactory</u>	<u>Less than Satisfactory</u>	<u>Satisfactory</u>	<u>More than Satisfactory</u>	<u>Excellent</u>
Judge						
McSeveney, Robert	68	1%	3%	10%	34%	51%
Phillips, Glenn	42	2%	7%	31%	31%	29%

Kirkland Municipal Court

	<u>Number</u>	<u>Unsatisfactory</u>	<u>Less than Satisfactory</u>	<u>Satisfactory</u>	<u>More than Satisfactory</u>	<u>Excellent</u>
Judge						
Raines, Albert	86	5%	3%	17%	35%	40%
Commissioner						
Eng, Park*	30	0%	3%	7%	60%	30%
Pro-tem						
Stewart, Norm Scott*	34	0%	0%	21%	44%	35%

Lake Forest Park Municipal Court

	<u>Number</u>	<u>Unsatisfactory</u>	<u>Less than Satisfactory</u>	<u>Satisfactory</u>	<u>More than Satisfactory</u>	<u>Excellent</u>
Judge						
Portnoy, Linda	49	8%	16%	35%	22%	18%
Pro-tem						
Monroe-Asher, Elizabeth*	30	7%	3%	20%	30%	40%

Maple Valley Municipal Court

	<u>Number</u>	<u>Unsatisfactory</u>	<u>Less than Satisfactory</u>	<u>Satisfactory</u>	<u>More than Satisfactory</u>	<u>Excellent</u>
Judge						
Rochon, Stephen*	59	10%	12%	29%	25%	24%

Mercer Island Municipal Court

	<u>Number</u>	<u>Unsatisfactory</u>	<u>Less than Satisfactory</u>	<u>Satisfactory</u>	<u>More than Satisfactory</u>	<u>Excellent</u>
Judge						
Stewart, Wayne	35	3%	6%	23%	37%	31%

Pacific Municipal Court

	<u>Number</u>	<u>Unsatisfactory</u>	<u>Less than Satisfactory</u>	<u>Satisfactory</u>	<u>More than Satisfactory</u>	<u>Excellent</u>
Judge						
Rochon, Stephen*	59	10%	12%	29%	25%	24%

Renton Municipal Court

	<u>Number</u>	<u>Unsatisfactory</u>	<u>Less than Satisfactory</u>	<u>Satisfactory</u>	<u>More than Satisfactory</u>	<u>Excellent</u>
Judge						
Jurado, Terry	49	14%	22%	14%	27%	22%

Table 11: Municipal Courts, Demeanor, continued

SeaTac Municipal Court

	<u>Number</u>	<u>Unsatisfactory</u>	<u>Less than Satisfactory</u>	<u>Satisfactory</u>	<u>More than Satisfactory</u>	<u>Excellent</u>
Judge						
Codd, Paul	33	0%	6%	15%	39%	39%
Pro-tem						
Cordi-Bejarano, Elizabeth M.	25	12%	8%	32%	24%	24%

Seattle Municipal Court

	<u>Number</u>	<u>Unsatisfactory</u>	<u>Less than Satisfactory</u>	<u>Satisfactory</u>	<u>More than Satisfactory</u>	<u>Excellent</u>
Judges						
Bonner, Fred	76	26%	18%	25%	16%	14%
Charles, Edsonya	15	33%	33%	13%	20%	0%
Hightower, Judith	91	10%	16%	29%	24%	21%
Holifield, George	91	24%	26%	16%	19%	14%
Hurtado, Michael	107	3%	6%	21%	35%	36%
Kondo, C. Kimi	71	6%	20%	44%	21%	10%
Mamiya, Ron	82	4%	6%	23%	33%	34%
Rietschel, Jean	67	0%	13%	10%	46%	30%
Commissioner						
Eisenberg, Adam	41	15%	7%	27%	29%	22%
Magistrates						
DeVilla, Francis	33	9%	3%	30%	36%	21%
Duffey, Charles	19	16%	0%	37%	26%	21%
Hankins, Debbie	28	11%	11%	29%	43%	7%
Wilson, Shirley	36	6%	0%	17%	53%	25%
Pro-tem						
Alicea-Galvan, Veronica	42	21%	12%	12%	31%	24%
Danieli, Ann	33	0%	3%	15%	36%	45%
Durham, Elsa R.	44	27%	14%	30%	18%	11%

Tukwila Municipal Court

	<u>Number</u>	<u>Unsatisfactory</u>	<u>Less than Satisfactory</u>	<u>Satisfactory</u>	<u>More than Satisfactory</u>	<u>Excellent</u>
Judge						
Walden, Kimberly	34	0%	3%	12%	32%	53%
Commissioner						
Eng, Park*	30	0%	3%	7%	60%	30%
Pro-tem						
Cromwell, Gregory F.	5	0%	0%	80%	20%	0%
Cufley, Christy Gerhart	9	0%	11%	33%	33%	22%
Monroe-Asher, Elizabeth*	30	7%	3%	20%	30%	40%
Prothero, Mark	10	10%	10%	0%	50%	30%
Stewart, Norm Scott*	34	0%	0%	21%	44%	35%

*This person's results are replicated in several places on this table.

Table 12: Municipal Courts, Impartiality

Auburn Municipal Court

	<u>Number</u>	<u>Unsatisfactory</u>	<u>Less than Satisfactory</u>	<u>Satisfactory</u>	<u>More than Satisfactory</u>	<u>Excellent</u>
Judge						
Burns, Patrick	49	22%	27%	31%	10%	10%
Pro-tem						
Curry, John F.	18	17%	11%	22%	44%	6%
Williams, Daniel	11	9%	9%	36%	36%	9%

Black Diamond Municipal Court

	<u>Number</u>	<u>Unsatisfactory</u>	<u>Less than Satisfactory</u>	<u>Satisfactory</u>	<u>More than Satisfactory</u>	<u>Excellent</u>
Judge						
West, Robert	21	14%	10%	19%	24%	33%

Bothell Municipal Court

	<u>Number</u>	<u>Unsatisfactory</u>	<u>Less than Satisfactory</u>	<u>Satisfactory</u>	<u>More than Satisfactory</u>	<u>Excellent</u>
Judge						
Rusden, John	46	2%	7%	15%	52%	24%

Des Moines Municipal Court

	<u>Number</u>	<u>Unsatisfactory</u>	<u>Less than Satisfactory</u>	<u>Satisfactory</u>	<u>More than Satisfactory</u>	<u>Excellent</u>
Judge						
Hartl, Colleen	41	7%	0%	22%	27%	44%

Enumclaw Municipal Court

	<u>Number</u>	<u>Unsatisfactory</u>	<u>Less than Satisfactory</u>	<u>Satisfactory</u>	<u>More than Satisfactory</u>	<u>Excellent</u>
Judge						
Berner, David	27	4%	26%	22%	26%	22%

Federal Way Municipal Court

	<u>Number</u>	<u>Unsatisfactory</u>	<u>Less than Satisfactory</u>	<u>Satisfactory</u>	<u>More than Satisfactory</u>	<u>Excellent</u>
Judge						
Tracy, David	46	9%	13%	37%	24%	17%
Commissioner						
Platter, Tony	37	0%	3%	11%	46%	41%

Issaquah Municipal Court

	<u>Number</u>	<u>Unsatisfactory</u>	<u>Less than Satisfactory</u>	<u>Satisfactory</u>	<u>More than Satisfactory</u>	<u>Excellent</u>
Judge						
Jarvis, Peter	21	29%	10%	19%	29%	14%
Pro-tem						
Stewart, Norm Scott*	33	0%	0%	24%	39%	36%

Table 12: Municipal Courts, Impartiality, continued

Kent Municipal Court

	<u>Number</u>	<u>Unsatisfactory</u>	<u>Less than Satisfactory</u>	<u>Satisfactory</u>	<u>More than Satisfactory</u>	<u>Excellent</u>
Judge						
McSeveney, Robert	68	4%	4%	15%	34%	43%
Phillips, Glenn	42	5%	10%	31%	29%	26%

Kirkland Municipal Court

	<u>Number</u>	<u>Unsatisfactory</u>	<u>Less than Satisfactory</u>	<u>Satisfactory</u>	<u>More than Satisfactory</u>	<u>Excellent</u>
Judge						
Raines, Albert	86	6%	6%	17%	28%	43%
Commissioner						
Eng, Park*	29	0%	7%	28%	31%	34%
Pro-tem						
Stewart, Norm Scott*	33	0%	0%	24%	39%	36%

Lake Forest Park Municipal Court

	<u>Number</u>	<u>Unsatisfactory</u>	<u>Less than Satisfactory</u>	<u>Satisfactory</u>	<u>More than Satisfactory</u>	<u>Excellent</u>
Judge						
Portnoy, Linda	49	20%	27%	20%	22%	10%
Pro-tem						
Monroe-Asher, Elizabeth*	29	7%	7%	17%	31%	38%

Maple Valley Municipal Court

	<u>Number</u>	<u>Unsatisfactory</u>	<u>Less than Satisfactory</u>	<u>Satisfactory</u>	<u>More than Satisfactory</u>	<u>Excellent</u>
Judge						
Rochon, Stephen*	58	14%	21%	22%	24%	19%

Mercer Island Municipal Court

	<u>Number</u>	<u>Unsatisfactory</u>	<u>Less than Satisfactory</u>	<u>Satisfactory</u>	<u>More than Satisfactory</u>	<u>Excellent</u>
Judge						
Stewart, Wayne	35	3%	17%	20%	31%	29%

Pacific Municipal Court

	<u>Number</u>	<u>Unsatisfactory</u>	<u>Less than Satisfactory</u>	<u>Satisfactory</u>	<u>More than Satisfactory</u>	<u>Excellent</u>
Judge						
Rochon, Stephen*	58	14%	21%	22%	24%	19%

Renton Municipal Court

	<u>Number</u>	<u>Unsatisfactory</u>	<u>Less than Satisfactory</u>	<u>Satisfactory</u>	<u>More than Satisfactory</u>	<u>Excellent</u>
Judge						
Jurado, Terry	49	12%	20%	16%	31%	20%

Table 12: Municipal Courts, Impartiality, continued

SeaTac Municipal Court

	<u>Number</u>	<u>Unsatisfactory</u>	<u>Less than Satisfactory</u>	<u>Satisfactory</u>	<u>More than Satisfactory</u>	<u>Excellent</u>
Judge						
Codd, Paul	33	0%	12%	18%	42%	27%
Pro-tem						
Cordi-Bejarano, Elizabeth M.	24	13%	13%	46%	13%	17%

Seattle Municipal Court

	<u>Number</u>	<u>Unsatisfactory</u>	<u>Less than Satisfactory</u>	<u>Satisfactory</u>	<u>More than Satisfactory</u>	<u>Excellent</u>
Judges						
Bonner, Fred	76	16%	26%	22%	17%	18%
Charles, Edsonya	15	40%	40%	7%	13%	0%
Hightower, Judith	91	5%	14%	30%	25%	25%
Holifield, George	91	23%	21%	25%	20%	11%
Hurtado, Michael	106	8%	12%	31%	22%	26%
Kondo, C. Kimi	71	15%	15%	35%	25%	8%
Mamiya, Ron	82	9%	15%	23%	30%	23%
Rietschel, Jean	67	6%	7%	21%	37%	28%
Commissioner						
Eisenberg, Adam	40	23%	20%	18%	25%	15%
Magistrates						
DeVilla, Francis	33	12%	9%	27%	27%	24%
Duffey, Charles	19	16%	0%	32%	32%	21%
Hankins, Debbie	28	14%	11%	32%	39%	4%
Wilson, Shirley	36	8%	6%	22%	50%	14%
Pro-tem						
Alicea-Galvan, Veronica	42	21%	12%	24%	19%	24%
Danieli, Ann	33	0%	6%	12%	39%	42%
Durham, Elsa R.	44	23%	30%	20%	16%	11%

Tukwila Municipal Court

	<u>Number</u>	<u>Unsatisfactory</u>	<u>Less than Satisfactory</u>	<u>Satisfactory</u>	<u>More than Satisfactory</u>	<u>Excellent</u>
Judge						
Walden, Kimberly	34	0%	12%	18%	29%	41%
Commissioner						
Eng, Park*	29	0%	7%	28%	31%	34%
Pro-tem						
Cromwell, Gregory F.	5	0%	0%	80%	20%	0%
Cufley, Christy Gerhart	9	0%	11%	33%	44%	11%
Monroe-Asher, Elizabeth*	29	7%	7%	17%	31%	38%
Prothero, Mark	10	10%	10%	0%	40%	40%
Stewart, Norm Scott*	33	0%	0%	24%	39%	36%

*This person's results are replicated in several places on this table.

Table 13: Municipal Courts, Overall Performance

Auburn Municipal Court

	<u>Number</u>	<u>Unsatisfactory</u>	<u>Less than Satisfactory</u>	<u>Satisfactory</u>	<u>More than Satisfactory</u>	<u>Excellent</u>
Judge						
Burns, Patrick	50	16%	26%	38%	12%	8%
Pro-tem						
Curry, John F.	18	22%	0%	28%	44%	6%
Williams, Daniel	11	0%	18%	45%	27%	9%

Black Diamond Municipal Court

	<u>Number</u>	<u>Unsatisfactory</u>	<u>Less than Satisfactory</u>	<u>Satisfactory</u>	<u>More than Satisfactory</u>	<u>Excellent</u>
Judge						
West, Robert	21	10%	10%	19%	33%	29%

Bothell Municipal Court

	<u>Number</u>	<u>Unsatisfactory</u>	<u>Less than Satisfactory</u>	<u>Satisfactory</u>	<u>More than Satisfactory</u>	<u>Excellent</u>
Judge						
Rusden, John	46	0%	4%	20%	48%	28%

Des Moines Municipal Court

	<u>Number</u>	<u>Unsatisfactory</u>	<u>Less than Satisfactory</u>	<u>Satisfactory</u>	<u>More than Satisfactory</u>	<u>Excellent</u>
Judge						
Hartl, Colleen	41	5%	2%	10%	39%	44%

Enumclaw Municipal Court

	<u>Number</u>	<u>Unsatisfactory</u>	<u>Less than Satisfactory</u>	<u>Satisfactory</u>	<u>More than Satisfactory</u>	<u>Excellent</u>
Judge						
Berner, David	27	0%	26%	33%	22%	19%

Federal Way Municipal Court

	<u>Number</u>	<u>Unsatisfactory</u>	<u>Less than Satisfactory</u>	<u>Satisfactory</u>	<u>More than Satisfactory</u>	<u>Excellent</u>
Judge						
Tracy, David	46	4%	17%	33%	35%	11%
Commissioner						
Platter, Tony	37	0%	3%	14%	49%	35%

Issaquah Municipal Court

	<u>Number</u>	<u>Unsatisfactory</u>	<u>Less than Satisfactory</u>	<u>Satisfactory</u>	<u>More than Satisfactory</u>	<u>Excellent</u>
Judge						
Jarvis, Peter	21	19%	5%	29%	33%	14%
Pro-tem						
Stewart, Norm Scott*	33	0%	0%	24%	45%	30%

Table 13: Municipal Courts, Overall Performance, continued

Kent Municipal Court

	<u>Number</u>	<u>Unsatisfactory</u>	<u>Less than Satisfactory</u>	<u>Satisfactory</u>	<u>More than Satisfactory</u>	<u>Excellent</u>
Judge						
McSeveney, Robert	68	1%	4%	10%	40%	44%
Phillips, Glenn	42	2%	12%	31%	26%	29%

Kirkland Municipal Court

	<u>Number</u>	<u>Unsatisfactory</u>	<u>Less than Satisfactory</u>	<u>Satisfactory</u>	<u>More than Satisfactory</u>	<u>Excellent</u>
Judge						
Raines, Albert	86	5%	7%	20%	34%	35%
Commissioner						
Eng, Park*	29	0%	7%	28%	34%	31%
Pro-tem						
Stewart, Norm Scott*	33	0%	0%	24%	45%	30%

Lake Forest Park Municipal Court

	<u>Number</u>	<u>Unsatisfactory</u>	<u>Less than Satisfactory</u>	<u>Satisfactory</u>	<u>More than Satisfactory</u>	<u>Excellent</u>
Judge						
Portnoy, Linda	49	12%	29%	27%	20%	12%
Pro-tem						
Monroe-Asher, Elizabeth*	30	7%	10%	17%	43%	23%

Maple Valley Municipal Court

	<u>Number</u>	<u>Unsatisfactory</u>	<u>Less than Satisfactory</u>	<u>Satisfactory</u>	<u>More than Satisfactory</u>	<u>Excellent</u>
Judge						
Rochon, Stephen*	58	10%	17%	33%	28%	12%

Mercer Island Municipal Court

	<u>Number</u>	<u>Unsatisfactory</u>	<u>Less than Satisfactory</u>	<u>Satisfactory</u>	<u>More than Satisfactory</u>	<u>Excellent</u>
Judge						
Stewart, Wayne	35	3%	3%	31%	31%	31%

Pacific Municipal Court

	<u>Number</u>	<u>Unsatisfactory</u>	<u>Less than Satisfactory</u>	<u>Satisfactory</u>	<u>More than Satisfactory</u>	<u>Excellent</u>
Judge						
Rochon, Stephen*	58	10%	17%	33%	28%	12%

Renton Municipal Court

	<u>Number</u>	<u>Unsatisfactory</u>	<u>Less than Satisfactory</u>	<u>Satisfactory</u>	<u>More than Satisfactory</u>	<u>Excellent</u>
Judge						
Jurado, Terry	49	12%	18%	20%	35%	14%

Table 13: Municipal Courts, Overall Performance, continued

SeaTac Municipal Court

	<u>Number</u>	<u>Unsatisfactory</u>	<u>Less than Satisfactory</u>	<u>Satisfactory</u>	<u>More than Satisfactory</u>	<u>Excellent</u>
Judge						
Codd, Paul	33	3%	3%	21%	52%	21%
Pro-tem						
Cordi-Bejarano, Elizabeth M.	24	13%	17%	38%	21%	13%

Seattle Municipal Court

	<u>Number</u>	<u>Unsatisfactory</u>	<u>Less than Satisfactory</u>	<u>Satisfactory</u>	<u>More than Satisfactory</u>	<u>Excellent</u>
Judges						
Bonner, Fred	75	15%	20%	31%	23%	12%
Charles, Edsonya	15	47%	27%	20%	7%	0%
Hightower, Judith	91	8%	15%	29%	34%	14%
Holifield, George	91	18%	25%	22%	24%	11%
Hurtado, Michael	108	5%	11%	31%	31%	22%
Kondo, C. Kimi	71	11%	17%	41%	24%	7%
Mamiya, Ron	82	4%	11%	28%	35%	22%
Rietschel, Jean	67	4%	7%	16%	40%	31%
Commissioner						
Eisenberg, Adam	41	7%	32%	20%	34%	7%
Magistrates						
DeVilla, Francis	33	9%	9%	30%	33%	18%
Duffey, Charles	19	16%	11%	26%	32%	16%
Hankins, Debbie	28	14%	14%	36%	32%	4%
Wilson, Shirley	36	6%	6%	33%	44%	11%
Pro-tem						
Alicea-Galvan, Veronica	42	14%	14%	21%	31%	19%
Danieli, Ann	33	0%	3%	15%	39%	42%
Durham, Elsa R.	43	28%	26%	30%	9%	7%

Tukwila Municipal Court

	<u>Number</u>	<u>Unsatisfactory</u>	<u>Less than Satisfactory</u>	<u>Satisfactory</u>	<u>More than Satisfactory</u>	<u>Excellent</u>
Judge						
Walden, Kimberly	34	0%	12%	15%	44%	29%
Commissioner						
Eng, Park*	29	0%	7%	28%	34%	31%
Pro-tem						
Cromwell, Gregory F.	5	20%	0%	60%	20%	0%
Cufley, Christy Gerhart	9	0%	11%	44%	33%	11%
Monroe-Asher, Elizabeth*	30	7%	10%	17%	43%	23%
Prothero, Mark	10	10%	10%	0%	50%	30%
Stewart, Norm Scott*	33	0%	0%	24%	45%	30%

*This person's results are replicated in several places on this table.

Conclusion

The results of the 2005 Judicial Evaluation Survey present a favorable assessment of the judges, commissioners, magistrates, and pro-tems of the King County District and municipal courts. Overall, judicial officers received positive ratings (satisfactory and above) more than 77% of the time. The results of the survey are in-line with results from previous surveys of these same courts and individuals, which suggests they are reliable indicators of judicial performance.

Bibliography

Krosnick, Jon A. (1999). "Survey Research," *Annual Review of Psychology*, 50:537-67. Annual Reviews.